

One Bedroom Annexe Kit Range

The Hanley One Bedroom Annexe Kit

from £38,845.60 (inc. VAT @ 20%)

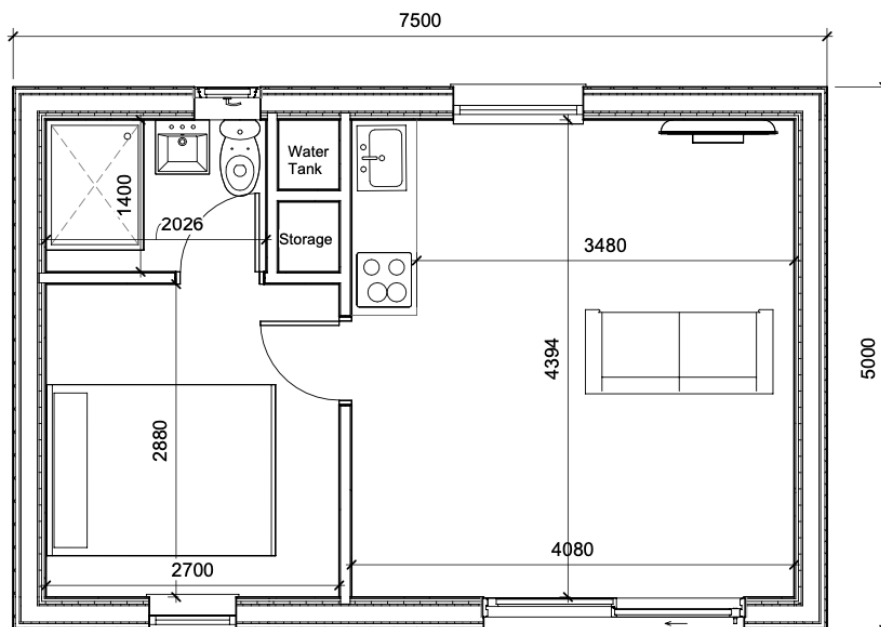


Image and floor plan shown for illustration purposes.

Annexe By Future Rooms Limited

T: 01452 840284 E: info@annexebyfuturerooms.co.uk W: www.annexebyfuturerooms.co.uk

VAT Registration Number 426 5264 95 Registered in England and Wales: 13539655

Registered Office: Unit 27, Staunton Court Business Park, Ledbury Road, Staunton, Gloucestershire GL19 3QS

The Hanley One Bedroom Annexe Kit Specification

Specification
<ul style="list-style-type: none"> • Insulated Timber Frame Floor (200mm Insulation) • Caber Deck Flooring Sheets • SIP Panels for Walls (150mm Insulation) • SIP Panels for Roof (175mm Insulation) • Breather Membrane • Cavity Batons • Insect Mesh • External Cladding (2 Sides British Cedar, 2 Sides Thermowood)* • EPDM Rubber Roof Full Kit • Guttering and Downpipes • All SIP Joining Splines • Stainless Steel Brad Nails • UPVC Glazing Per Model** • Vapour Barrier • Metal Fascias • Full Technical Drawings and Instructions for Installation • Full Fixing Kit (Foam, Screws, Timber Locks, Glues)

Optional Upgrades
Alternative Cladding
Upgrades to Windows and Doors

Annexe By Future Rooms Limited

T: 01452 840284 E: info@annexebyfuturerooms.co.uk W: www.annexebyfuturerooms.co.uk

VAT Registration Number 426 5264 95 Registered in England and Wales: 13539655

Registered Office: Unit 27, Staunton Court Business Park, Ledbury Road, Staunton, Gloucestershire GL19 3QS

The Ledbury One Bedroom Annexe Kit
from £38,845.60 (inc. VAT @ 20%)

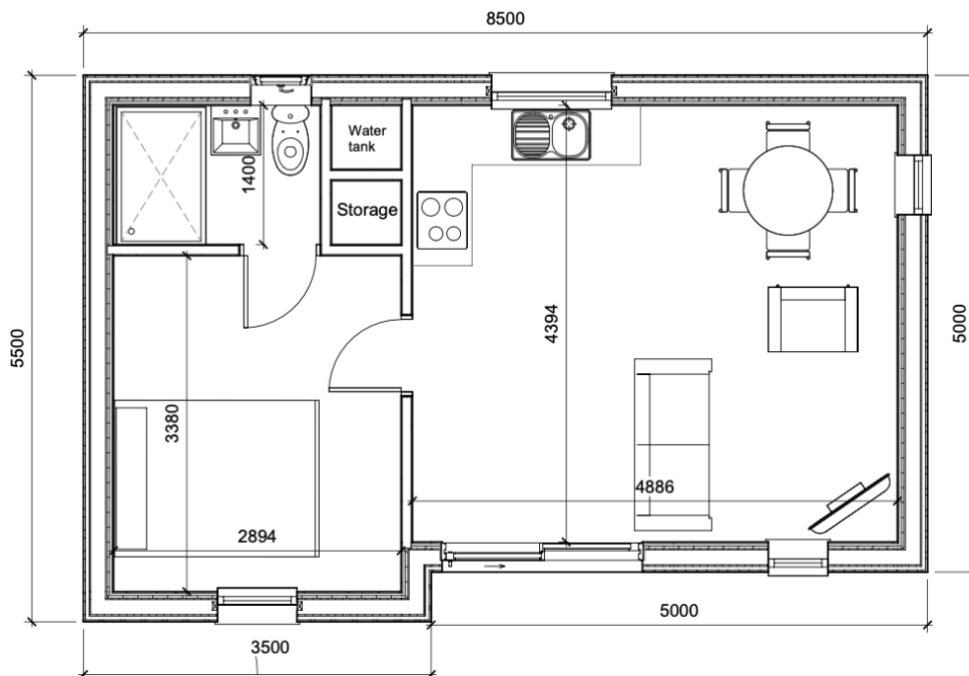


Image and floor plan shown for illustration purposes.

Annexe By Future Rooms Limited

T: 01452 840284 E: info@annexebyfuturerooms.co.uk W: www.annexebyfuturerooms.co.uk

VAT Registration Number 426 5264 95 Registered in England and Wales: 13539655

Registered Office: Unit 27, Staunton Court Business Park, Ledbury Road, Staunton, Gloucestershire GL19 3QS

The Ledbury One Bedroom Annexe Kit Specification

Specification
<ul style="list-style-type: none"> • Insulated Timber Frame Floor (200mm Insulation) • Caber Deck Flooring Sheets • SIP Panels for Walls (150mm Insulation) • SIP Panels for Roof (175mm Insulation) • Breather Membrane • Cavity Batons • Insect Mesh • External Cladding (2 Sides British Cedar, 2 Sides Thermowood)* • EPDM Rubber Roof Full Kit • Guttering and Downpipes • All SIP Joining Splines • Stainless Steel Brad Nails • UPVC Glazing Per Model** • Vapour Barrier • Metal Fascias • Full Technical Drawings and Instructions for Installation • Full Fixing Kit (Foam, Screws, Timber Locks, Glues)

Optional Upgrades
Alternative Cladding
Upgrades to Windows and Doors

Annexe By Future Rooms Limited

T: 01452 840284 E: info@annexebefuturerooms.co.uk W: www.annexebefuturerooms.co.uk

VAT Registration Number 426 5264 95 Registered in England and Wales: 13539655

Registered Office: Unit 27, Staunton Court Business Park, Ledbury Road, Staunton, Gloucestershire GL19 3QS

The Malvern One Bedroom Annexe Kit
from £37,851.60 (inc. VAT @ 20%)

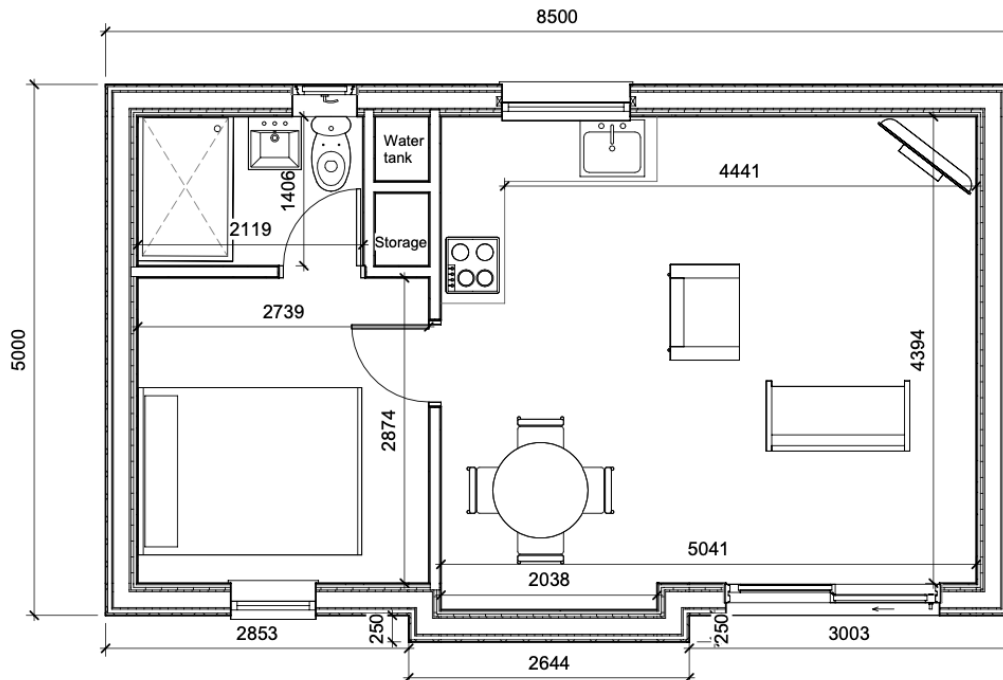


Image and floor plan shown for illustration purposes.

Annexe By Future Rooms Limited

T: 01452 840284 E: info@annexebyfuturerooms.co.uk W: www.annexebyfuturerooms.co.uk
 VAT Registration Number 426 5264 95 Registered in England and Wales: 13539655
 Registered Office: Unit 27, Staunton Court Business Park, Ledbury Road, Staunton, Gloucestershire GL19 3QS

The Malvern One Bedroom Annexe Kit Specification

Specification
<ul style="list-style-type: none"> • Insulated Timber Frame Floor (200mm Insulation) • Caber Deck Flooring Sheets • SIP Panels for Walls (150mm Insulation) • SIP Panels for Roof (175mm Insulation) • Breather Membrane • Cavity Batons • Insect Mesh • External Cladding (2 Sides British Cedar, 2 Sides Thermowood)* • EPDM Rubber Roof Full Kit • Guttering and Downpipes • All SIP Joining Splines • Stainless Steel Brad Nails • UPVC Glazing Per Model** • Vapour Barrier • Metal Fascias • Full Technical Drawings and Instructions for Installation • Full Fixing Kit (Foam, Screws, Timber Locks, Glues)

Optional Upgrades
Alternative Cladding
Upgrades to Windows and Doors

Annexe By Future Rooms Limited

T: 01452 840284 E: info@annexebyfuturerooms.co.uk W: www.annexebyfuturerooms.co.uk

VAT Registration Number 426 5264 95 Registered in England and Wales: 13539655

Registered Office: Unit 27, Staunton Court Business Park, Ledbury Road, Staunton, Gloucestershire GL19 3QS

The Welland One Bedroom Annexe Kit
from £37,851.60 (inc. VAT @ 20%)

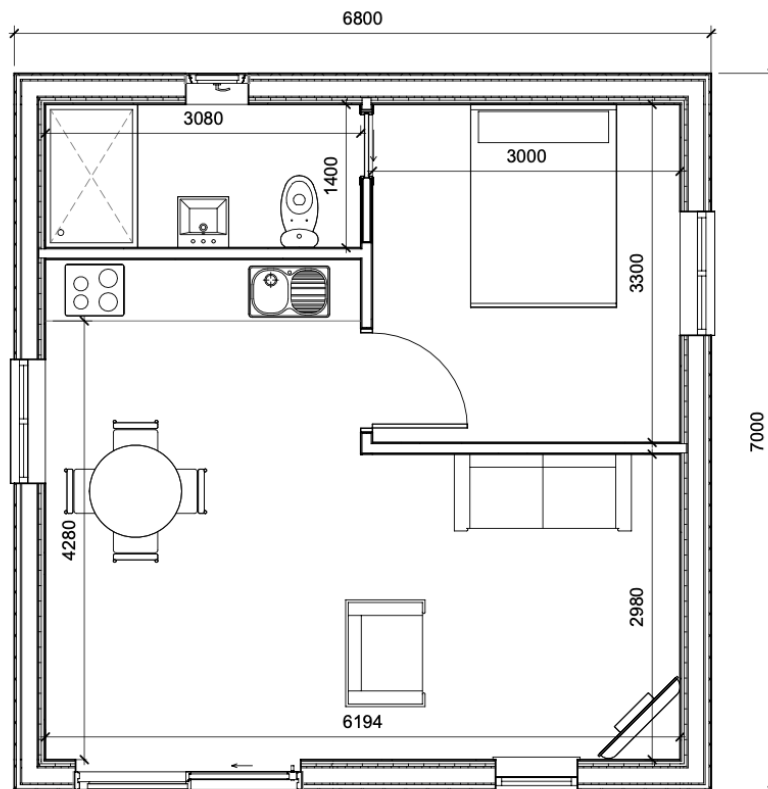


Image and floor plan shown for illustration purposes.

Annexe By Future Rooms Limited

T: 01452 840284 E: info@annexebyfuturerooms.co.uk W: www.annexebyfuturerooms.co.uk

VAT Registration Number 426 5264 95 Registered in England and Wales: 13539655

Registered Office: Unit 27, Staunton Court Business Park, Ledbury Road, Staunton, Gloucestershire GL19 3QS

The Welland One Bedroom Annexe Kit Specification

Specification
<ul style="list-style-type: none"> • Insulated Timber Frame Floor (200mm Insulation) • Caber Deck Flooring Sheets • SIP Panels for Walls (150mm Insulation) • SIP Panels for Roof (175mm Insulation) • Breather Membrane • Cavity Batons • Insect Mesh • External Cladding (2 Sides British Cedar, 2 Sides Thermowood)* • EPDM Rubber Roof Full Kit • Guttering and Downpipes • All SIP Joining Splines • Stainless Steel Brad Nails • UPVC Glazing Per Model** • Vapour Barrier • Metal Fascias • Full Technical Drawings and Instructions for Installation • Full Fixing Kit (Foam, Screws, Timber Locks, Glues)

Optional Upgrades
Alternative Cladding
Upgrades to Windows and Doors

Annexe By Future Rooms Limited

T: 01452 840284 E: info@annexebyfuturerooms.co.uk W: www.annexebyfuturerooms.co.uk

VAT Registration Number 426 5264 95 Registered in England and Wales: 13539655

Registered Office: Unit 27, Staunton Court Business Park, Ledbury Road, Staunton, Gloucestershire GL19 3QS

Two Bedroom Annexe Kit Range

The Hanley Two Bedroom Annexe Kit from £45,873.20 (inc. VAT @ 20%)

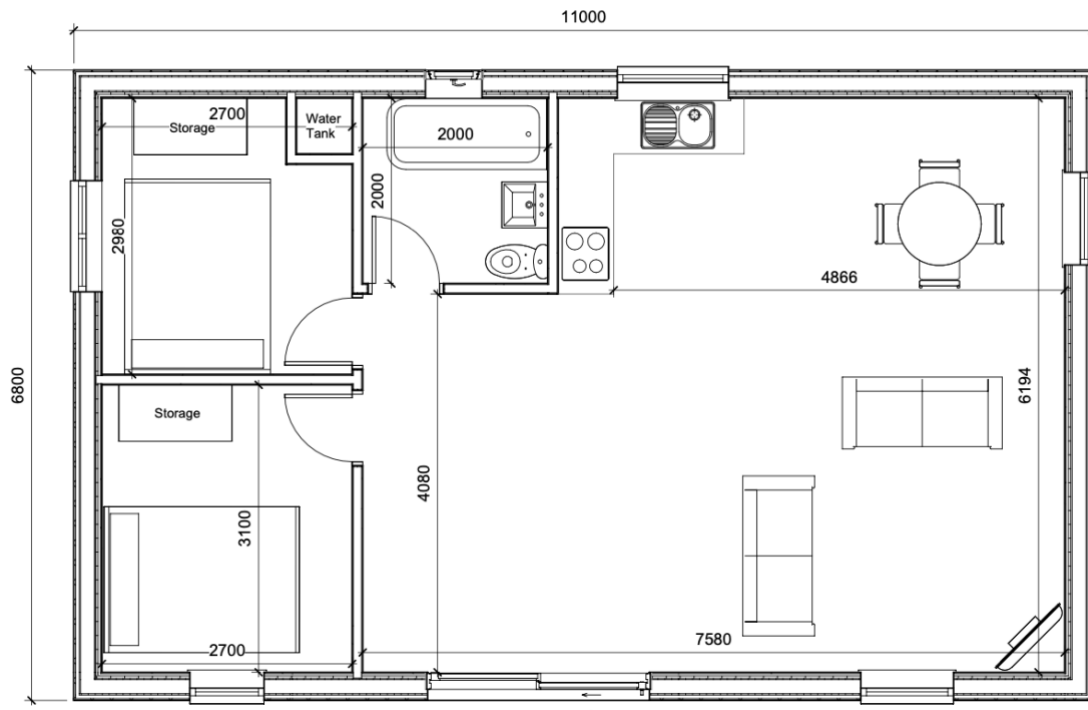


Image and floor plan shown for illustration purposes.

Annexe By Future Rooms Limited

T: 01452 840284 E: info@annexebyfuturerooms.co.uk W: www.annexebyfuturerooms.co.uk
VAT Registration Number 426 5264 95 Registered in England and Wales: 13539655
Registered Office: Unit 27, Staunton Court Business Park, Ledbury Road, Staunton, Gloucestershire GL19 3QS

The Hanley Two Bedroom Annexe Kit Specification

Specification
<ul style="list-style-type: none"> • Insulated Timber Frame Floor (200mm Insulation) • Caber Deck Flooring Sheets • SIP Panels for Walls (150mm Insulation) • SIP Panels for Roof (175mm Insulation) • Breather Membrane • Cavity Batons • Insect Mesh • External Cladding (2 Sides British Cedar, 2 Sides Thermowood)* • EPDM Rubber Roof Full Kit • Guttering and Downpipes • All SIP Joining Splines • Stainless Steel Brad Nails • UPVC Glazing Per Model** • Vapour Barrier • Metal Fascias • Full Technical Drawings and Instructions for Installation • Full Fixing Kit (Foam, Screws, Timber Locks, Glues)

Optional Upgrades
Alternative Cladding
Upgrades to Windows and Doors

Annexe By Future Rooms Limited

T: 01452 840284 E: info@annexebyfuturerooms.co.uk W: www.annexebyfuturerooms.co.uk

VAT Registration Number 426 5264 95 Registered in England and Wales: 13539655

Registered Office: Unit 27, Staunton Court Business Park, Ledbury Road, Staunton, Gloucestershire GL19 3QS

The Ledbury Two Bedroom Annexe Kit
from £45,873.20 (inc. VAT @ 20%)

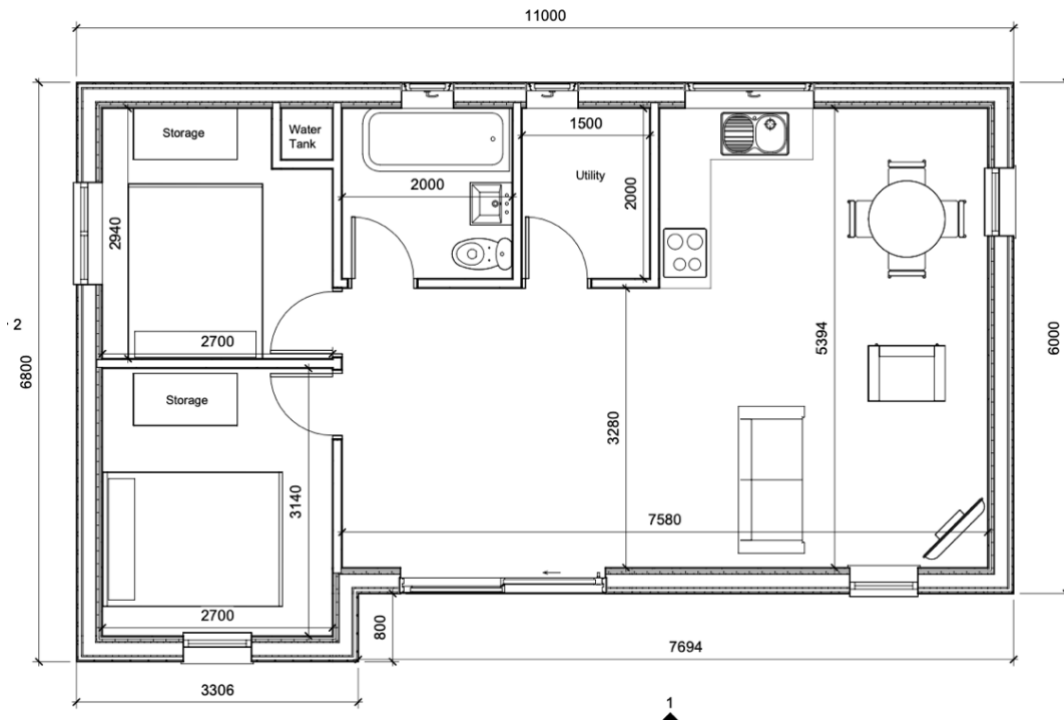


Image and floor plan shown for illustration purposes.

Annexe By Future Rooms Limited

T: 01452 840284 E: info@annexebyfuturerooms.co.uk W: www.annexebyfuturerooms.co.uk
VAT Registration Number 426 5264 95 Registered in England and Wales: 13539655
Registered Office: Unit 27, Staunton Court Business Park, Ledbury Road, Staunton, Gloucestershire GL19 3QS

The Ledbury Two Bedroom Annexe Kit Specification

Specification
<ul style="list-style-type: none"> • Insulated Timber Frame Floor (200mm Insulation) • Caber Deck Flooring Sheets • SIP Panels for Walls (150mm Insulation) • SIP Panels for Roof (175mm Insulation) • Breather Membrane • Cavity Batons • Insect Mesh • External Cladding (2 Sides British Cedar, 2 Sides Thermowood)* • EPDM Rubber Roof Full Kit • Guttering and Downpipes • All SIP Joining Splines • Stainless Steel Brad Nails • UPVC Glazing Per Model** • Vapour Barrier • Metal Fascias • Full Technical Drawings and Instructions for Installation • Full Fixing Kit (Foam, Screws, Timber Locks, Glues)

Optional Upgrades
Alternative Cladding
Upgrades to Windows and Doors

Annexe By Future Rooms Limited

T: 01452 840284 E: info@annexebyfuturerooms.co.uk W: www.annexebyfuturerooms.co.uk

VAT Registration Number 426 5264 95 Registered in England and Wales: 13539655

Registered Office: Unit 27, Staunton Court Business Park, Ledbury Road, Staunton, Gloucestershire GL19 3QS

The Malvern Two Bedroom Annexe Kit
from £45,593.60 (inc. VAT @ 20%)

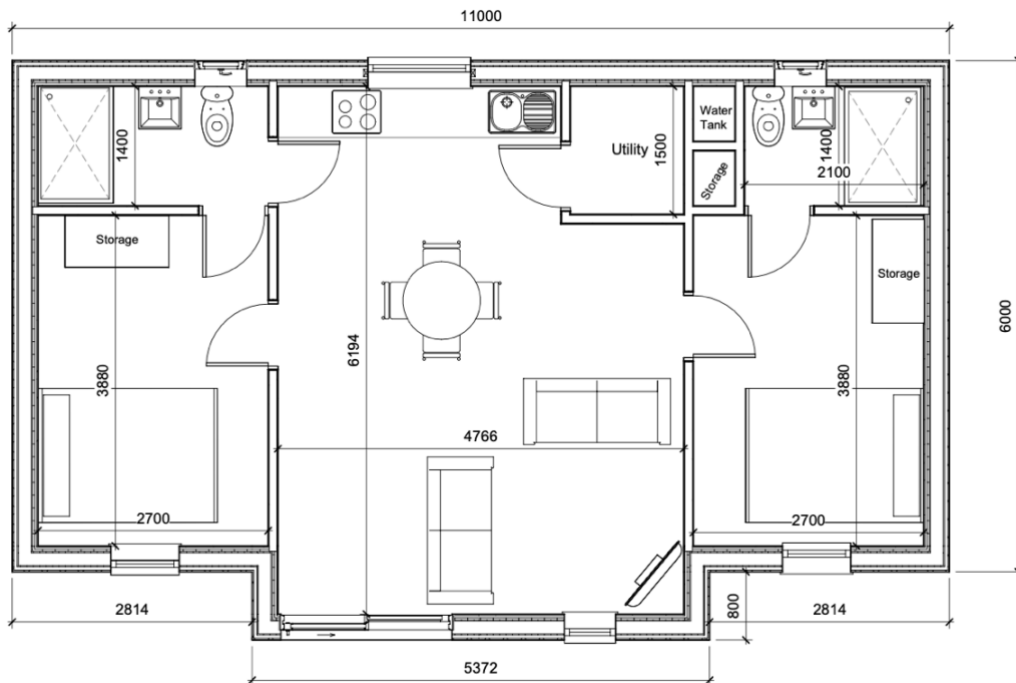


Image and floor plan shown for illustration purposes.

Annexe By Future Rooms Limited

T: 01452 840284 E: info@annexebyfuturerooms.co.uk W: www.annexebyfuturerooms.co.uk
VAT Registration Number 426 5264 95 Registered in England and Wales: 13539655
Registered Office: Unit 27, Staunton Court Business Park, Ledbury Road, Staunton, Gloucestershire GL19 3QS

The Malvern Two Bedroom Annexe Kit Specification

Specification
<ul style="list-style-type: none"> • Insulated Timber Frame Floor (200mm Insulation) • Caber Deck Flooring Sheets • SIP Panels for Walls (150mm Insulation) • SIP Panels for Roof (175mm Insulation) • Breather Membrane • Cavity Batons • Insect Mesh • External Cladding (2 Sides British Cedar, 2 Sides Thermowood)* • EPDM Rubber Roof Full Kit • Guttering and Downpipes • All SIP Joining Splines • Stainless Steel Brad Nails • UPVC Glazing Per Model** • Vapour Barrier • Metal Fascias • Full Technical Drawings and Instructions for Installation • Full Fixing Kit (Foam, Screws, Timber Locks, Glues)

Optional Upgrades
Alternative Cladding
Upgrades to Windows and Doors

Annexe By Future Rooms Limited

T: 01452 840284 E: info@annexebyfuturerooms.co.uk W: www.annexebyfuturerooms.co.uk

VAT Registration Number 426 5264 95 Registered in England and Wales: 13539655

Registered Office: Unit 27, Staunton Court Business Park, Ledbury Road, Staunton, Gloucestershire GL19 3QS

The Welland Two Bedroom Annexe Kit
from £45,593.60 (inc. VAT @ 20%)

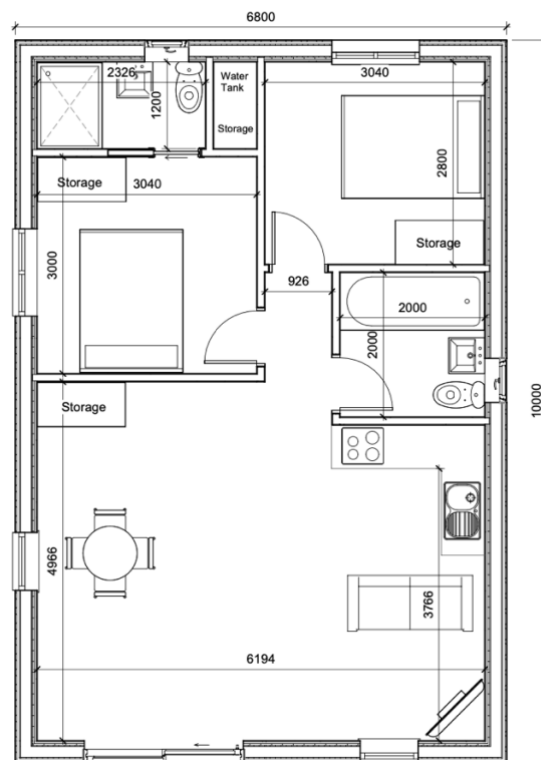


Image and floor plan shown for illustration purposes.

Annexe By Future Rooms Limited

T: 01452 840284 E: info@annexebefuturerooms.co.uk W: www.annexebefuturerooms.co.uk
VAT Registration Number 426 5264 95 Registered in England and Wales: 13539655
Registered Office: Unit 27, Staunton Court Business Park, Ledbury Road, Staunton, Gloucestershire GL19 3QS

The Welland Two Bedroom Annexe Kit Specification

Specification
<ul style="list-style-type: none"> • Insulated Timber Frame Floor (200mm Insulation) • Caber Deck Flooring Sheets • SIP Panels for Walls (150mm Insulation) • SIP Panels for Roof (175mm Insulation) • Breather Membrane • Cavity Batons • Insect Mesh • External Cladding (2 Sides British Cedar, 2 Sides Thermowood)* • EPDM Rubber Roof Full Kit • Guttering and Downpipes • All SIP Joining Splines • Stainless Steel Brad Nails • UPVC Glazing Per Model** • Vapour Barrier • Metal Fascias • Full Technical Drawings and Instructions for Installation • Full Fixing Kit (Foam, Screws, Timber Locks, Glues)

Optional Upgrades
Alternative Cladding
Upgrades to Windows and Doors

Annexe By Future Rooms Limited

T: 01452 840284 E: info@annexebyfuturerooms.co.uk W: www.annexebyfuturerooms.co.uk

VAT Registration Number 426 5264 95 Registered in England and Wales: 13539655

Registered Office: Unit 27, Staunton Court Business Park, Ledbury Road, Staunton, Gloucestershire GL19 3QS

Large Two Bedroom Annexe Kit Range

The Hanley Large Two Bedroom Annexe Kit

from £52,953.60 (inc. VAT @ 20%)

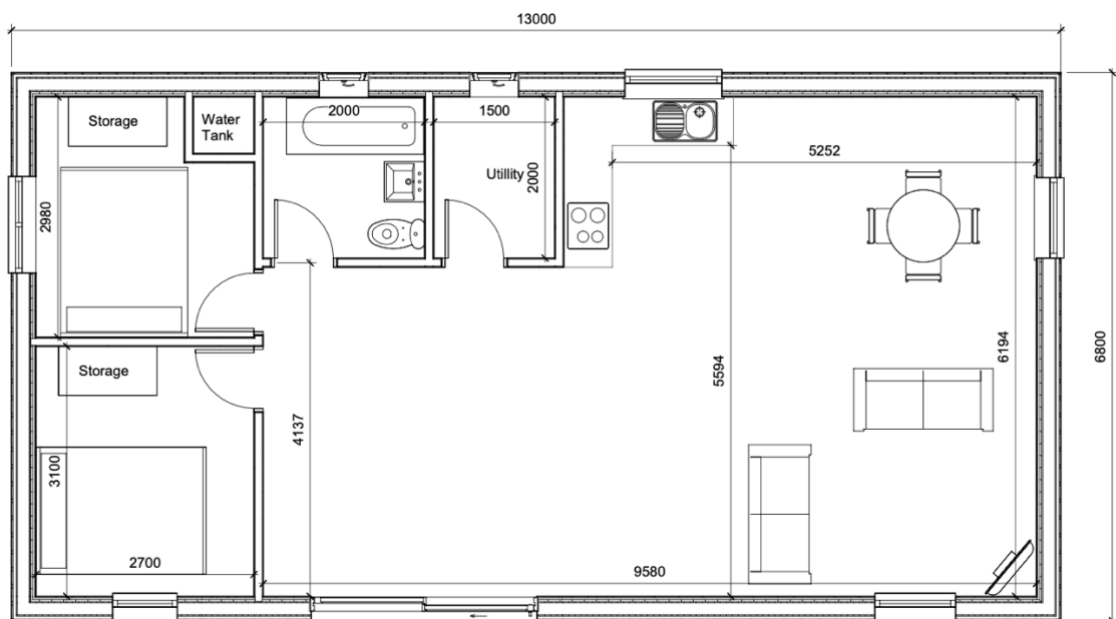


Image and floor plan shown for illustration purposes.

Annexe By Future Rooms Limited

T: 01452 840284 E: info@annexebyfuturerooms.co.uk W: www.annexebyfuturerooms.co.uk

VAT Registration Number 426 5264 95 Registered in England and Wales: 13539655

Registered Office: Unit 27, Staunton Court Business Park, Ledbury Road, Staunton, Gloucestershire GL19 3QS

The Hanley Large Two Bedroom Annexe Kit Specification

Specification
<ul style="list-style-type: none"> • Insulated Timber Frame Floor (200mm Insulation) • Caber Deck Flooring Sheets • SIP Panels for Walls (150mm Insulation) • SIP Panels for Roof (175mm Insulation) • Breather Membrane • Cavity Batons • Insect Mesh • External Cladding (2 Sides British Cedar, 2 Sides Thermowood)* • EPDM Rubber Roof Full Kit • Guttering and Downpipes • All SIP Joining Splines • Stainless Steel Brad Nails • UPVC Glazing Per Model** • Vapour Barrier • Metal Fascias • Full Technical Drawings and Instructions for Installation • Full Fixing Kit (Foam, Screws, Timber Locks, Glues)

Optional Upgrades
Alternative Cladding
Upgrades to Windows and Doors

Annexe By Future Rooms Limited

T: 01452 840284 E: info@annexebyfuturerooms.co.uk W: www.annexebyfuturerooms.co.uk

VAT Registration Number 426 5264 95 Registered in England and Wales: 13539655

Registered Office: Unit 27, Staunton Court Business Park, Ledbury Road, Staunton, Gloucestershire GL19 3QS

The Ledbury Large Two Bedroom Annexe
from £52,953.60 (inc. VAT @ 20%)

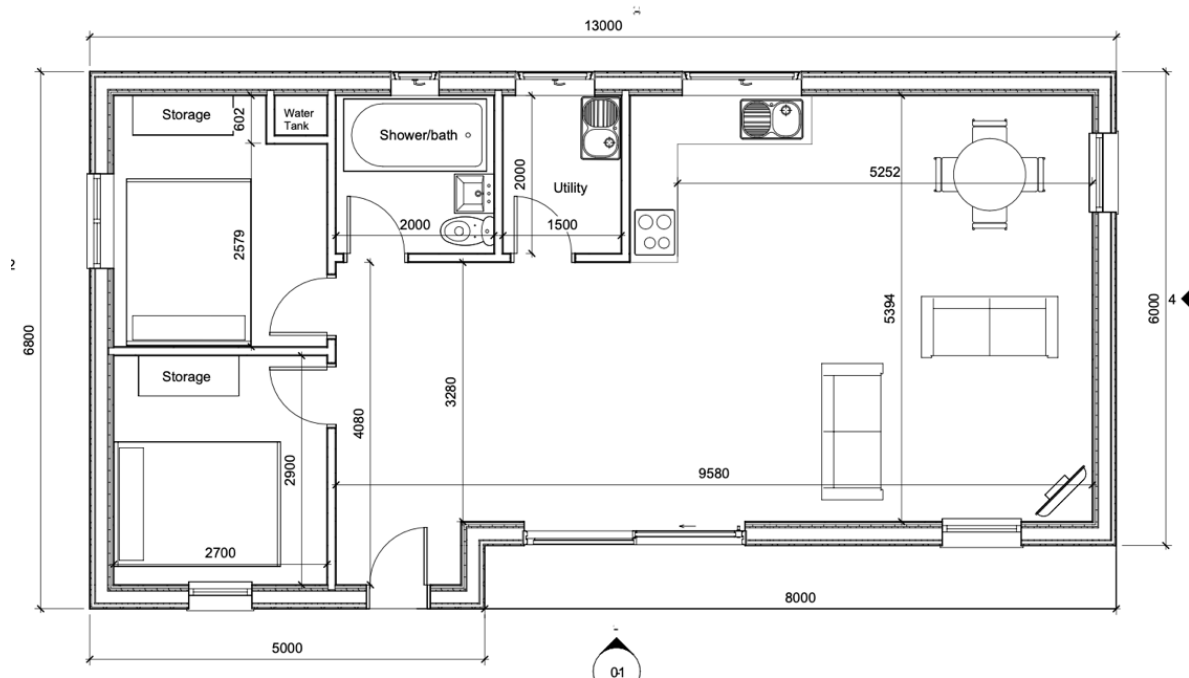


Image and floor plan shown for illustration purposes.

Annexe By Future Rooms Limited

T: 01452 840284 E: info@annexebyfuturerooms.co.uk W: www.annexebyfuturerooms.co.uk
 VAT Registration Number 426 5264 95 Registered in England and Wales: 13539655
 Registered Office: Unit 27, Staunton Court Business Park, Ledbury Road, Staunton, Gloucestershire GL19 3QS

The Ledbury Large Two Bedroom Annexe Kit Specification

Specification
<ul style="list-style-type: none"> • Insulated Timber Frame Floor (200mm Insulation) • Caber Deck Flooring Sheets • SIP Panels for Walls (150mm Insulation) • SIP Panels for Roof (175mm Insulation) • Breather Membrane • Cavity Batons • Insect Mesh • External Cladding (2 Sides British Cedar, 2 Sides Thermowood)* • EPDM Rubber Roof Full Kit • Guttering and Downpipes • All SIP Joining Splines • Stainless Steel Brad Nails • UPVC Glazing Per Model** • Vapour Barrier • Metal Fascias • Full Technical Drawings and Instructions for Installation • Full Fixing Kit (Foam, Screws, Timber Locks, Glues)

Optional Upgrades
Alternative Cladding
Upgrades to Windows and Doors

Annexe By Future Rooms Limited

T: 01452 840284 E: info@annexebyfuturerooms.co.uk W: www.annexebyfuturerooms.co.uk

VAT Registration Number 426 5264 95 Registered in England and Wales: 13539655

Registered Office: Unit 27, Staunton Court Business Park, Ledbury Road, Staunton, Gloucestershire GL19 3QS

The Malvern Large Two Bedroom Annexe Kit
from £53,673.60 (inc. VAT @ 20%)

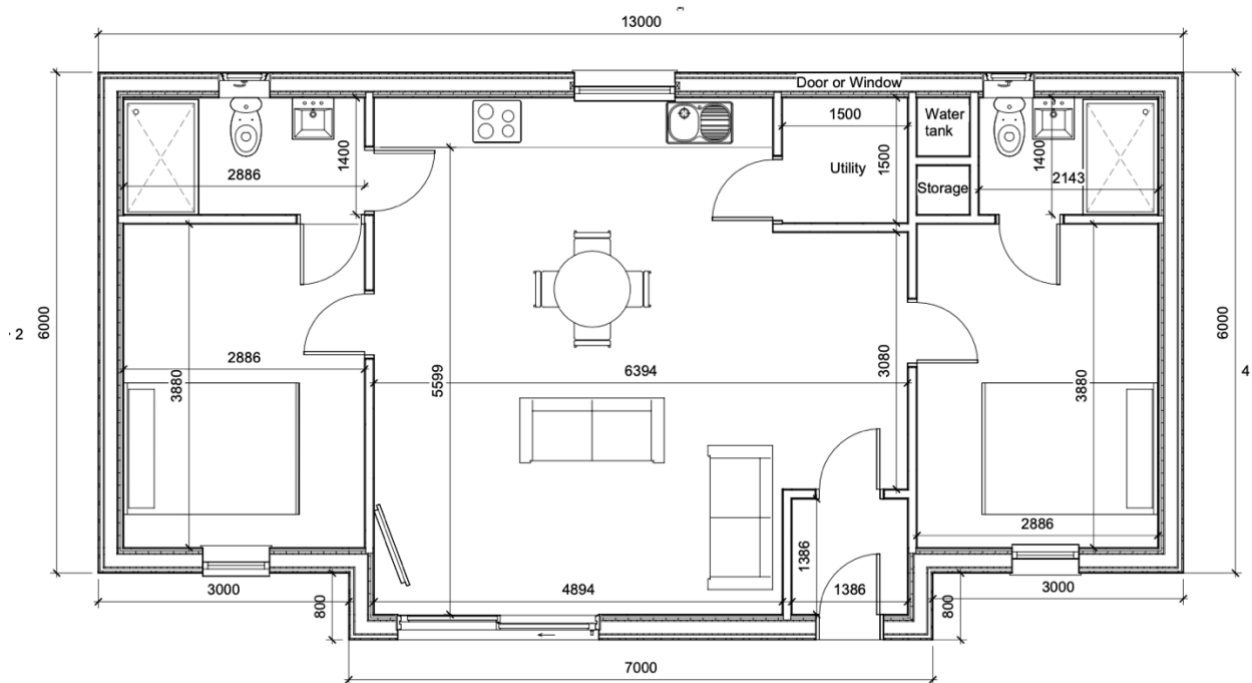


Image and floor plan shown for illustration purposes.

Annexe By Future Rooms Limited

T: 01452 840284 E: info@annexebefuturerooms.co.uk W: www.annexebefuturerooms.co.uk
 VAT Registration Number 426 5264 95 Registered in England and Wales: 13539655
 Registered Office: Unit 27, Staunton Court Business Park, Ledbury Road, Staunton, Gloucestershire GL19 3QS

The Malvern Large Two Bedroom Annexe Kit Specification

Specification
<ul style="list-style-type: none"> • Insulated Timber Frame Floor (200mm Insulation) • Caber Deck Flooring Sheets • SIP Panels for Walls (150mm Insulation) • SIP Panels for Roof (175mm Insulation) • Breather Membrane • Cavity Batons • Insect Mesh • External Cladding (2 Sides British Cedar, 2 Sides Thermowood)* • EPDM Rubber Roof Full Kit • Guttering and Downpipes • All SIP Joining Splines • Stainless Steel Brad Nails • UPVC Glazing Per Model** • Vapour Barrier • Metal Fascias • Full Technical Drawings and Instructions for Installation • Full Fixing Kit (Foam, Screws, Timber Locks, Glues)

Optional Upgrades
Alternative Cladding
Upgrades to Windows and Doors

Annexe By Future Rooms Limited

T: 01452 840284 E: info@annexebefuturerooms.co.uk W: www.annexebefuturerooms.co.uk

VAT Registration Number 426 5264 95 Registered in England and Wales: 13539655

Registered Office: Unit 27, Staunton Court Business Park, Ledbury Road, Staunton, Gloucestershire GL19 3QS

**The Welland Large Two Bedroom Annexe Kit
from £53,673.60 (inc. VAT @ 20%)**

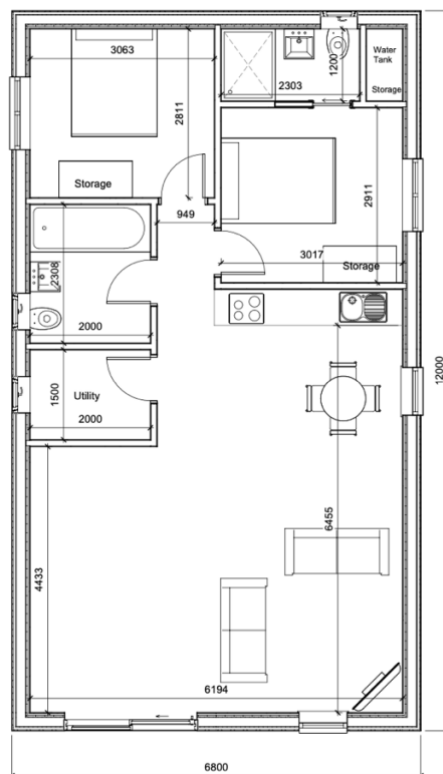


Image and floor plan shown for illustration purposes.

Annexe By Future Rooms Limited

T: 01452 840284 E: info@annexebyfuturerooms.co.uk W: www.annexebyfuturerooms.co.uk
VAT Registration Number 426 5264 95 Registered in England and Wales: 13539655
Registered Office: Unit 27, Staunton Court Business Park, Ledbury Road, Staunton, Gloucestershire GL19 3QS

The Welland Large Two Bedroom Annexe Kit Specification

Specification
<ul style="list-style-type: none"> • Insulated Timber Frame Floor (200mm Insulation) • Caber Deck Flooring Sheets • SIP Panels for Walls (150mm Insulation) • SIP Panels for Roof (175mm Insulation) • Breather Membrane • Cavity Batons • Insect Mesh • External Cladding (2 Sides British Cedar, 2 Sides Thermowood)* • EPDM Rubber Roof Full Kit • Guttering and Downpipes • All SIP Joining Splines • Stainless Steel Brad Nails • UPVC Glazing Per Model** • Vapour Barrier • Metal Fascias • Full Technical Drawings and Instructions for Installation • Full Fixing Kit (Foam, Screws, Timber Locks, Glues)

Optional Upgrades
Alternative Cladding
Upgrades to Windows and Doors

Annexe By Future Rooms Limited

T: 01452 840284 E: info@annexebyfuturerooms.co.uk W: www.annexebyfuturerooms.co.uk

VAT Registration Number 426 5264 95 Registered in England and Wales: 13539655

Registered Office: Unit 27, Staunton Court Business Park, Ledbury Road, Staunton, Gloucestershire GL19 3QS